



## KFN2 FINECORSА PNEUMATICO ATEX

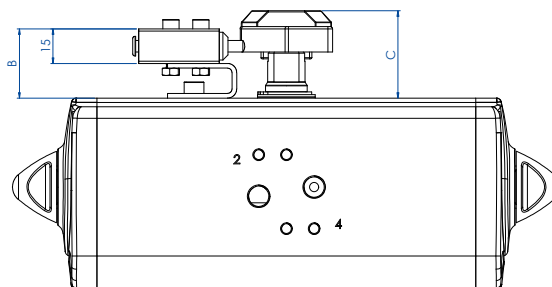
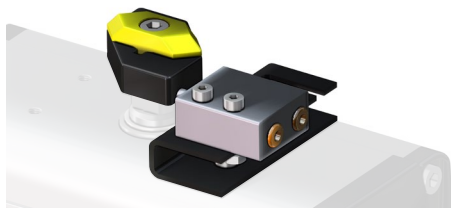
### KFN2 ATEX PNEUMATIC LIMIT SWITCH

 II2GD

#### ATEX II 2 GD KIT + FINECORSА

#### ATEX II 2 GD KIT + LIMIT SWITCH

Esempio Kit con 1 Finecorsа - Example Kit with 1 Limit Switch



Esempio Kit con 2 Finecorsа - Example Kit with 2 Limit Switch

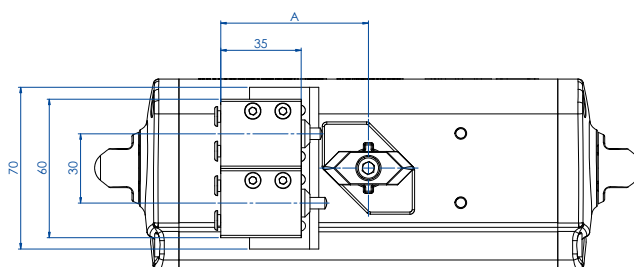
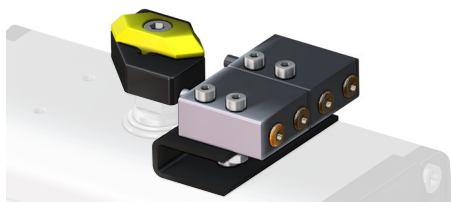


TABELLA CODICI - KIT + FINECORSА CODES TABLE - KIT+LIMIT SWITCHES

Attuatore Actuator	DAN15÷DAN120 SRN15 ÷ SRN60	DAN180÷DAN480 SRN90÷SRN240	DAN720 ÷ DAN1920 SRN360 ÷ SRN960
<b>Codice kit con 1 finecorsа - Code kit with 1 limit switch</b>	<b>KFN21015</b>	<b>KFN21120</b>	<b>KFN21720</b>
<b>Codice kit con 2 finecorsа - Code kit with 2 limit switches</b>	<b>KFN22015</b>	<b>KFN22120</b>	<b>KFN22720</b>
A mm.	60	60	70
B mm.	32,5	40	40
C mm.	38	48	48
D mm.	60	70	70

#### FINECORSА PNEUMATICO ATEX - FP210000

#### TEX PNEUMATIC LIMIT SWITCH - FP210000

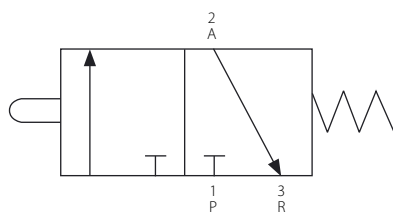


TABELLA CODICI - FINECORSА CODES TABLE - LIMIT SWITCHES

Attuatore Actuator	DAN15÷DAN120 SRN15 ÷ SRN60	DAN180÷DAN480 SRN90÷SRN240	DAN720 ÷ DAN1920 SRN360 ÷ SRN960
<b>Codice Code</b>	<b>FP210000</b>		
Codice fornitore Supplier code	VMW3501000100 (Metal work)		

#### CARATTERISTICHE PRINCIPALI

- Finecorsа pneumatico miniaturizzato con attacchi a cartuccia tubo  $\varnothing 4$  e M5 (assiali o laterali)
- Temperatura di utilizzo: da  $-10^{\circ}\text{C}$  a  $+60^{\circ}\text{C}$
- Pressione max. di esercizio: 10 bar.
- Fluido di alimentazione: aria filtrata e lubrificata alla temperatura di  $50^{\circ}\text{C}$  max.
- Portata a 6 bar. con  $\Delta p=1$ : 60 NI/min.
- Diametro di passaggio: 2,5 mm.
- Conformità ATEX II2GD.
- Può essere montato sui modelli DAN ed SRN tramite un kit composto da una basetta fissata al corpo dell'attuatore e da una camma montata sull'albero dello stesso.

#### TECHNICAL FEATURES

- Miniaturized pneumatic limit switch with cartridge connections; pipe  $\varnothing 4$  and M5 (axial or sideward)
- Working temperature: from  $-10^{\circ}\text{C}$  to  $+60^{\circ}\text{C}$
- Max working pressure: 10 bar
- Operating media: lubricated and filtered air at a temperature of  $50^{\circ}\text{C}$  max.
- Flow at 6 bar with  $\Delta p=1$ : 60 NI/min.
- Bore: 2,5 mm.
- In compliance to ATEX II2GD.
- It can be mounted onto DAN or SRN models using a kit which contains a mounting plate and a cam fixed to the actuator body